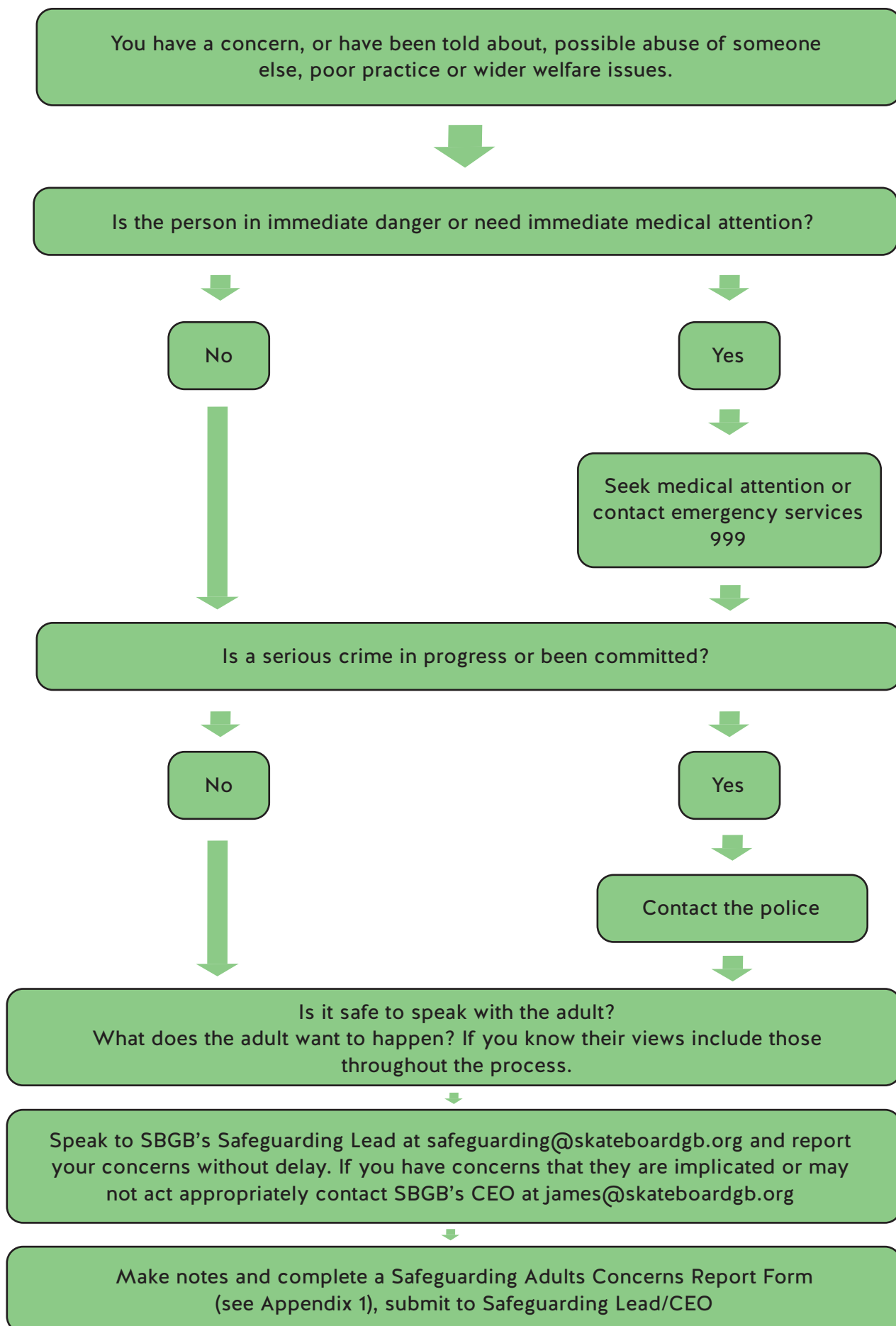
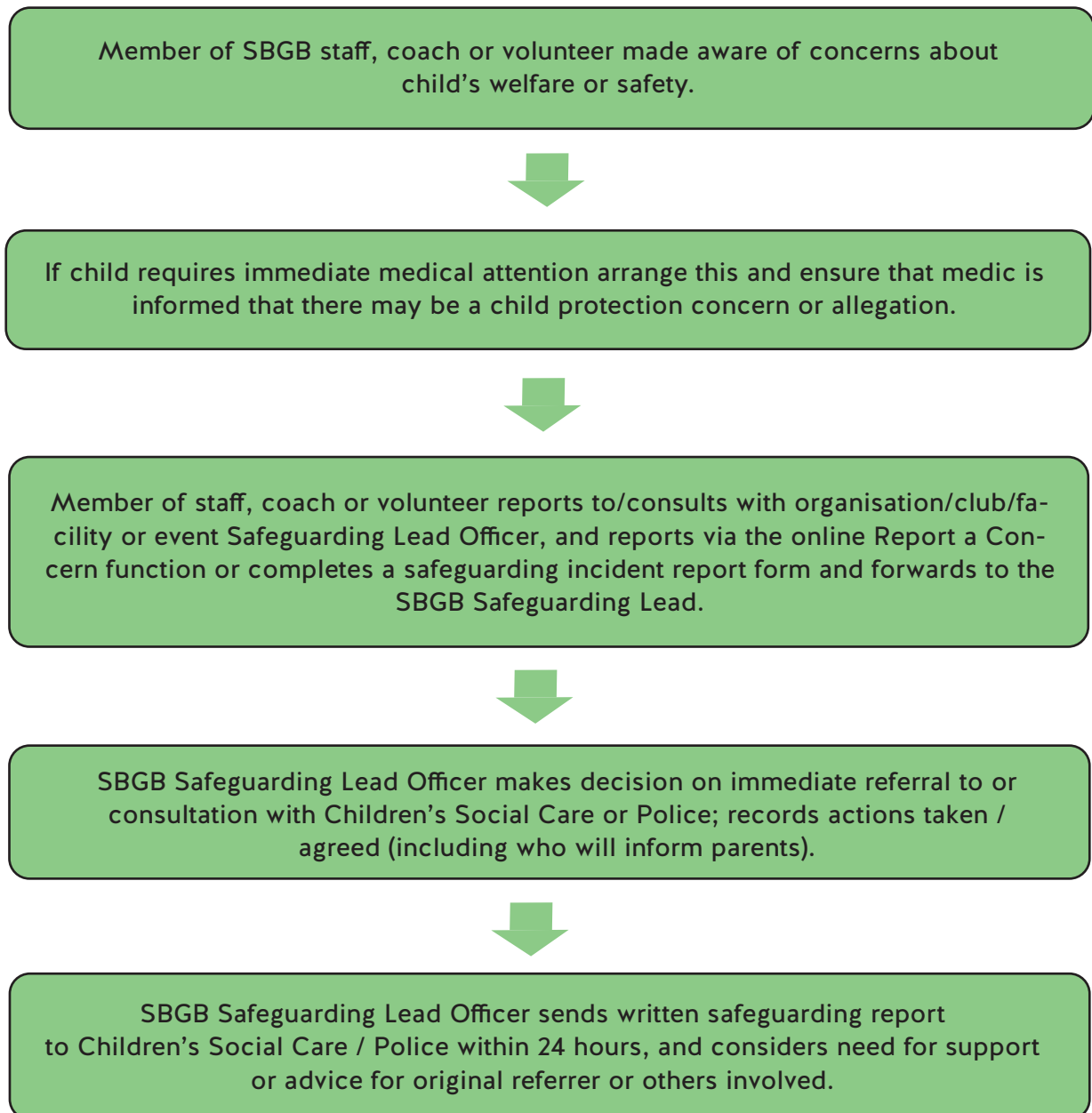


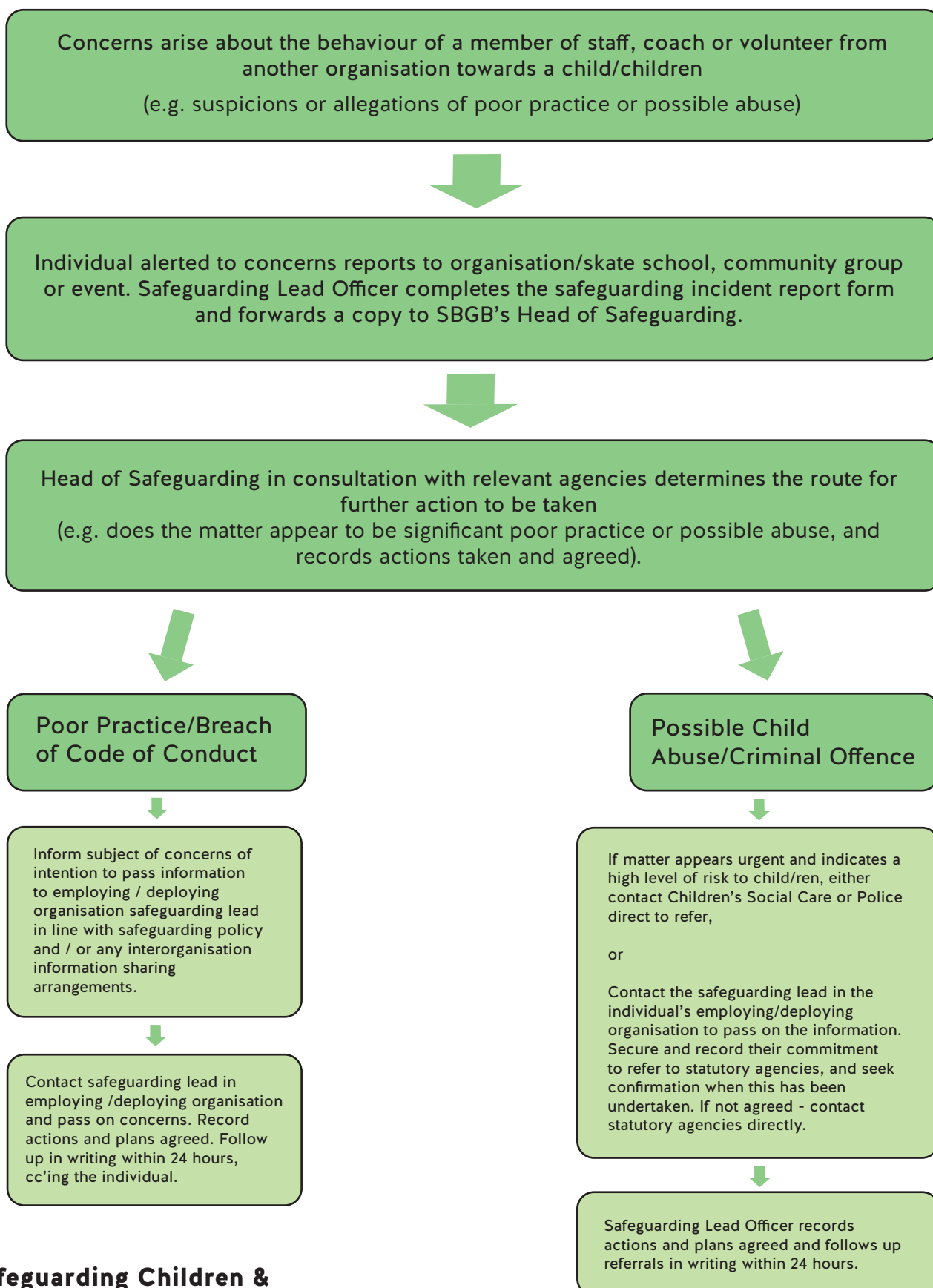
FLOWCHART 4: Reporting Concerns About Adults at Risk



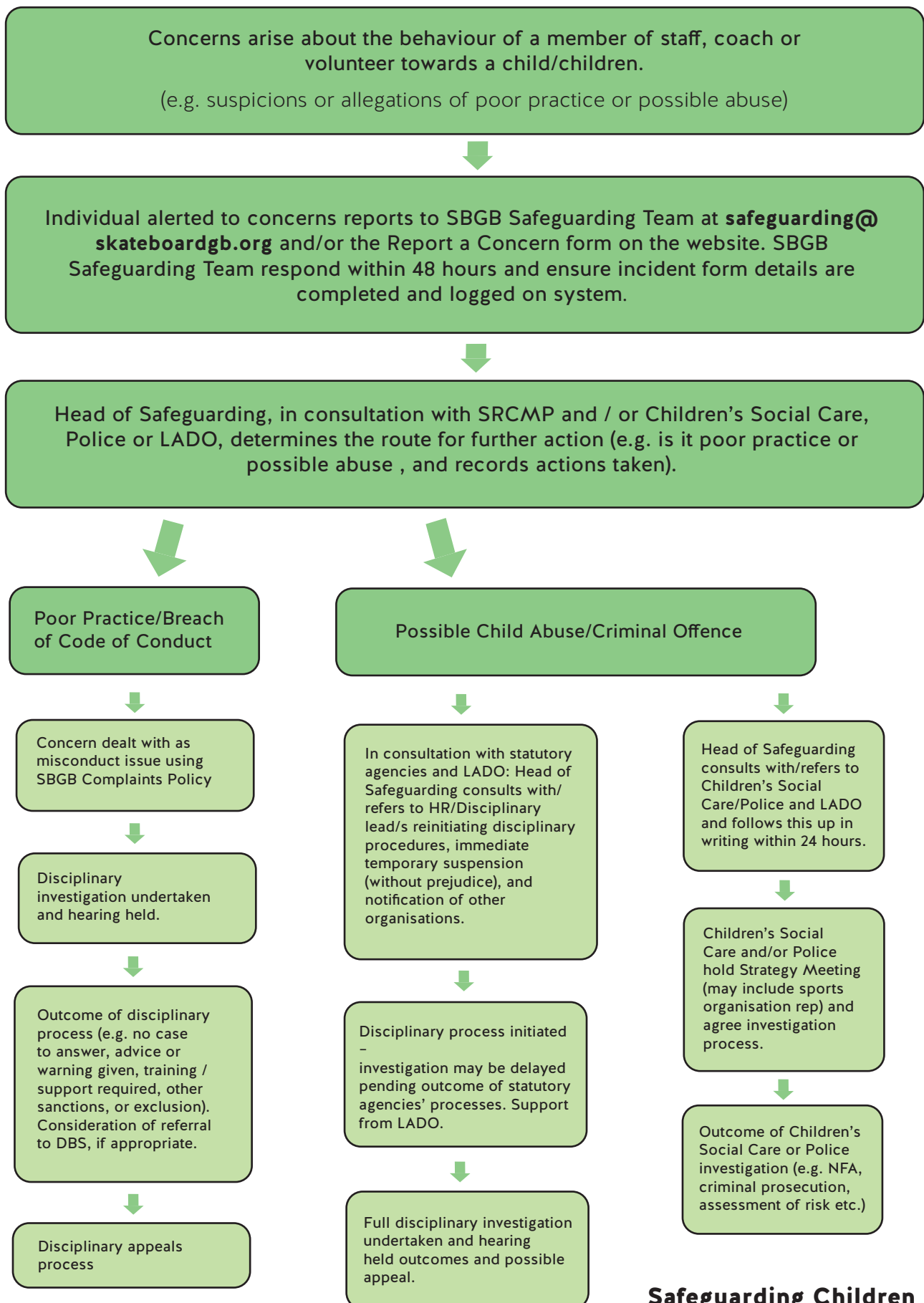
FLOWCHART 3: Where concerns arise about children and young people arising outside of sport (e.g. at home, school or in the community)



FLOWCHART 2: Where concerns arise with the behaviour of another organisation's staff member or volunteer (e.g. allegation about an individual working for a partner organisation)



FLOWCHART 1: Where concerns arise with the behaviour of an SBGB staff member or volunteer (e.g. allegation about a coaches behaviour towards a child)



Safeguarding Children & Young People Procedures
Flowchart 1