

# SKATEPARK ETIQUETTE



NO SNAKING. IF YOU'RE WAITING ON A RAMP, YOU'RE IN A QUEUE. DON'T GO BEFORE OTHERS HAVE FINISHED



STAND BACK FROM THE EDGE OF ALL RAMPS WHILE WAITING (NO OVERHANGING WHEELS OR LEGS)



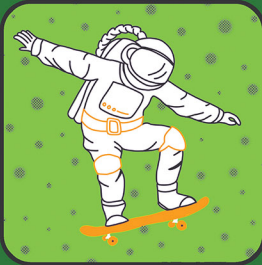
DO NOT CUT ACROSS THE BOTTOM OF RAMPS OR RIDE IN FROM THE SIDE



WATCH OUT FOR OTHER USERS AT ALL TIMES (CHECK BEHIND YOU)



LEAVE BELONGINGS AT THE SIDE – NOT ON THE RAMPS OR OBSTACLES



DO NOT DROP IN UNLESS YOU'RE CERTAIN THAT THE RAMP OR AREA IS CLEAR



RAMPS ARE TO BE USED ONE AT A TIME



HELP YOUNG ONES. PLEASE HELP YOUNG SKATERS ENJOY SKATEBOARDING



DON'T SIT ON THE RAMPS OR THE OBSTACLES

Follow these simple guidelines for a safe, creative and progressive space for everyone.

Whether you're a seasoned pro or a beginner, respect the flow of the park and watch out for others to keep the vibe positive.

Let's roll together.